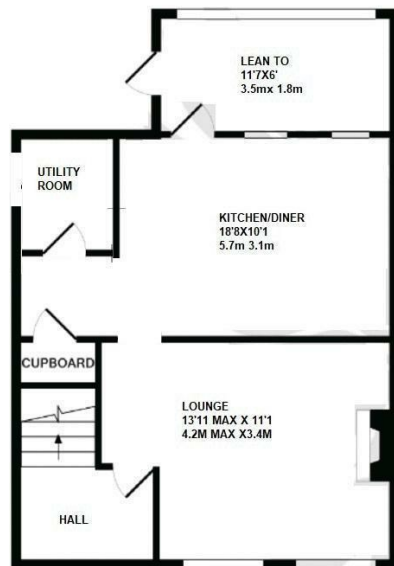




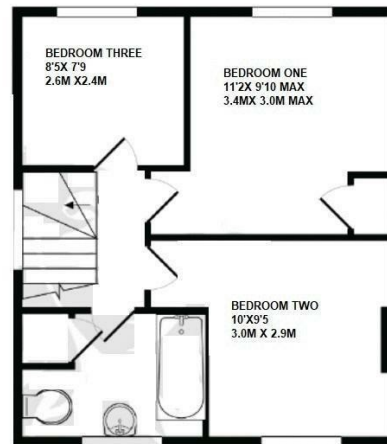
24 Athelstan Road, Malmesbury, Wiltshire, SN16 0DD

£1,200 PCM

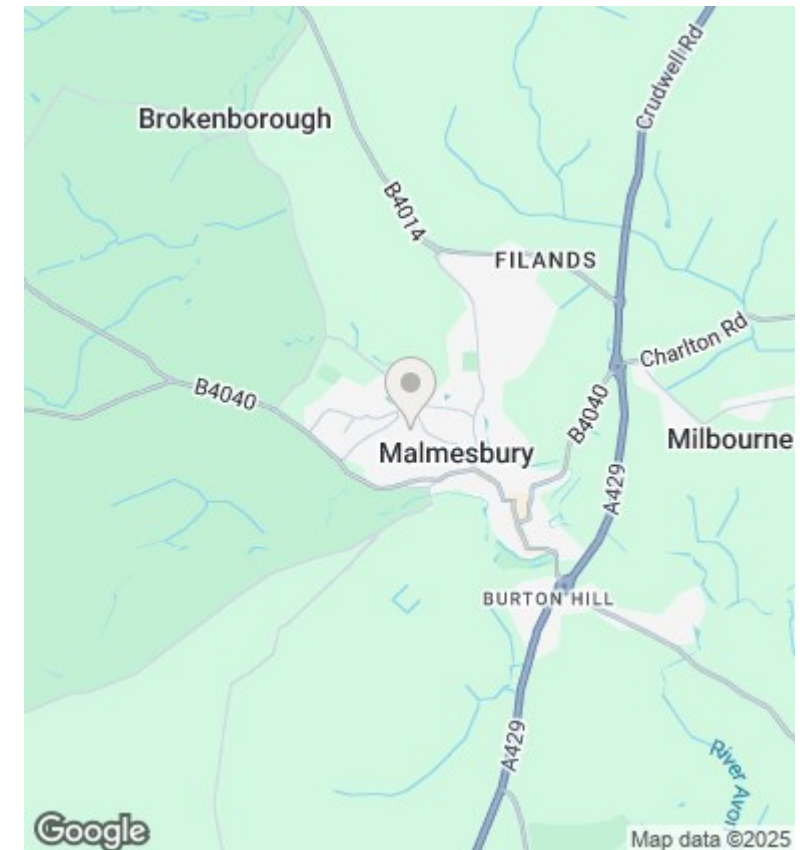
- THREE BEDROOM SEMI DETACHED
- OFF STREET PARKING
- MODERN KITCHEN & BATHROOM WITH SHOWER OVER BATH
- UTILITY ROOM
- WOOD BURNING STOVE
- ENCLOSED REAR GARDEN



GROUND FLOOR
APPROX. FLOOR
AREA 467 SQ.FT.
(43.4 SQ.M.)



1ST FLOOR
APPROX. FLOOR
AREA 395 SQ.FT.
(36.7 SQ.M.)



Directions

Viewings

Viewings by arrangement only. Call 01249 466999 to make an appointment.

Council Tax Band

B

EPC Rating:

Energy Efficiency Rating		
	Current	Potential
Very energy efficient - lower running costs		
(92 plus) A		
(81-91) B		
(69-80) C		
(55-68) D		
(39-54) E		
(21-38) F		
(1-20) G		
Not energy efficient - higher running costs		
England & Wales	EU Directive 2002/91/EC	